



UNITED STATES WEST COAST  
WASHINGTON  
STRAIT OF JUAN DE FUCA  
TO  
STRAIT OF GEORGIA

SOUNDINGS IN FATHOMS

NAUTICAL COMPASS DIFFERENCE

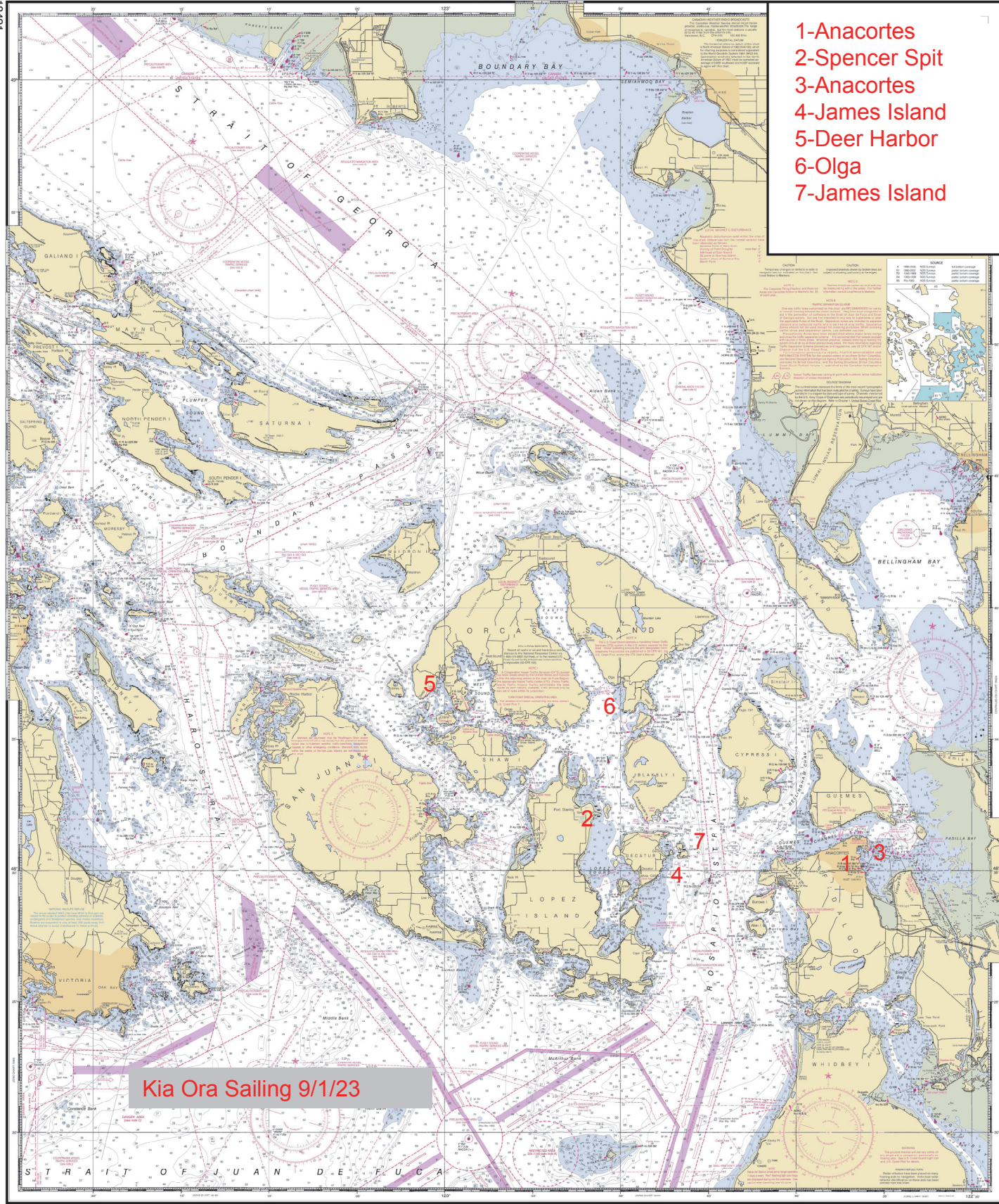
DATE	TRUE	MAGNETIC	VARIATION
1984	150° 00'	150° 00'	0° 00'
1985	150° 00'	150° 00'	0° 00'
1986	150° 00'	150° 00'	0° 00'
1987	150° 00'	150° 00'	0° 00'
1988	150° 00'	150° 00'	0° 00'
1989	150° 00'	150° 00'	0° 00'
1990	150° 00'	150° 00'	0° 00'
1991	150° 00'	150° 00'	0° 00'
1992	150° 00'	150° 00'	0° 00'
1993	150° 00'	150° 00'	0° 00'
1994	150° 00'	150° 00'	0° 00'
1995	150° 00'	150° 00'	0° 00'
1996	150° 00'	150° 00'	0° 00'
1997	150° 00'	150° 00'	0° 00'
1998	150° 00'	150° 00'	0° 00'
1999	150° 00'	150° 00'	0° 00'
2000	150° 00'	150° 00'	0° 00'
2001	150° 00'	150° 00'	0° 00'
2002	150° 00'	150° 00'	0° 00'
2003	150° 00'	150° 00'	0° 00'
2004	150° 00'	150° 00'	0° 00'
2005	150° 00'	150° 00'	0° 00'
2006	150° 00'	150° 00'	0° 00'
2007	150° 00'	150° 00'	0° 00'
2008	150° 00'	150° 00'	0° 00'
2009	150° 00'	150° 00'	0° 00'
2010	150° 00'	150° 00'	0° 00'
2011	150° 00'	150° 00'	0° 00'
2012	150° 00'	150° 00'	0° 00'
2013	150° 00'	150° 00'	0° 00'
2014	150° 00'	150° 00'	0° 00'
2015	150° 00'	150° 00'	0° 00'
2016	150° 00'	150° 00'	0° 00'
2017	150° 00'	150° 00'	0° 00'
2018	150° 00'	150° 00'	0° 00'
2019	150° 00'	150° 00'	0° 00'
2020	150° 00'	150° 00'	0° 00'
2021	150° 00'	150° 00'	0° 00'
2022	150° 00'	150° 00'	0° 00'
2023	150° 00'	150° 00'	0° 00'

NAUTICAL COMPASS DIFFERENCE

DATE	TRUE	MAGNETIC	VARIATION
1984	150° 00'	150° 00'	0° 00'
1985	150° 00'	150° 00'	0° 00'
1986	150° 00'	150° 00'	0° 00'
1987	150° 00'	150° 00'	0° 00'
1988	150° 00'	150° 00'	0° 00'
1989	150° 00'	150° 00'	0° 00'
1990	150° 00'	150° 00'	0° 00'
1991	150° 00'	150° 00'	0° 00'
1992	150° 00'	150° 00'	0° 00'
1993	150° 00'	150° 00'	0° 00'
1994	150° 00'	150° 00'	0° 00'
1995	150° 00'	150° 00'	0° 00'
1996	150° 00'	150° 00'	0° 00'
1997	150° 00'	150° 00'	0° 00'
1998	150° 00'	150° 00'	0° 00'
1999	150° 00'	150° 00'	0° 00'
2000	150° 00'	150° 00'	0° 00'
2001	150° 00'	150° 00'	0° 00'
2002	150° 00'	150° 00'	0° 00'
2003	150° 00'	150° 00'	0° 00'
2004	150° 00'	150° 00'	0° 00'
2005	150° 00'	150° 00'	0° 00'
2006	150° 00'	150° 00'	0° 00'
2007	150° 00'	150° 00'	0° 00'
2008	150° 00'	150° 00'	0° 00'
2009	150° 00'	150° 00'	0° 00'
2010	150° 00'	150° 00'	0° 00'
2011	150° 00'	150° 00'	0° 00'
2012	150° 00'	150° 00'	0° 00'
2013	150° 00'	150° 00'	0° 00'
2014	150° 00'	150° 00'	0° 00'
2015	150° 00'	150° 00'	0° 00'
2016	150° 00'	150° 00'	0° 00'
2017	150° 00'	150° 00'	0° 00'
2018	150° 00'	150° 00'	0° 00'
2019	150° 00'	150° 00'	0° 00'
2020	150° 00'	150° 00'	0° 00'
2021	150° 00'	150° 00'	0° 00'
2022	150° 00'	150° 00'	0° 00'
2023	150° 00'	150° 00'	0° 00'

18421

- 1-Anacortes
- 2-Spencer Spit
- 3-Anacortes
- 4-James Island
- 5-Deer Harbor
- 6-Olga
- 7-James Island



Kia Ora Sailing 9/1/23

18421

18421

SOUNDINGS IN FATHOMS



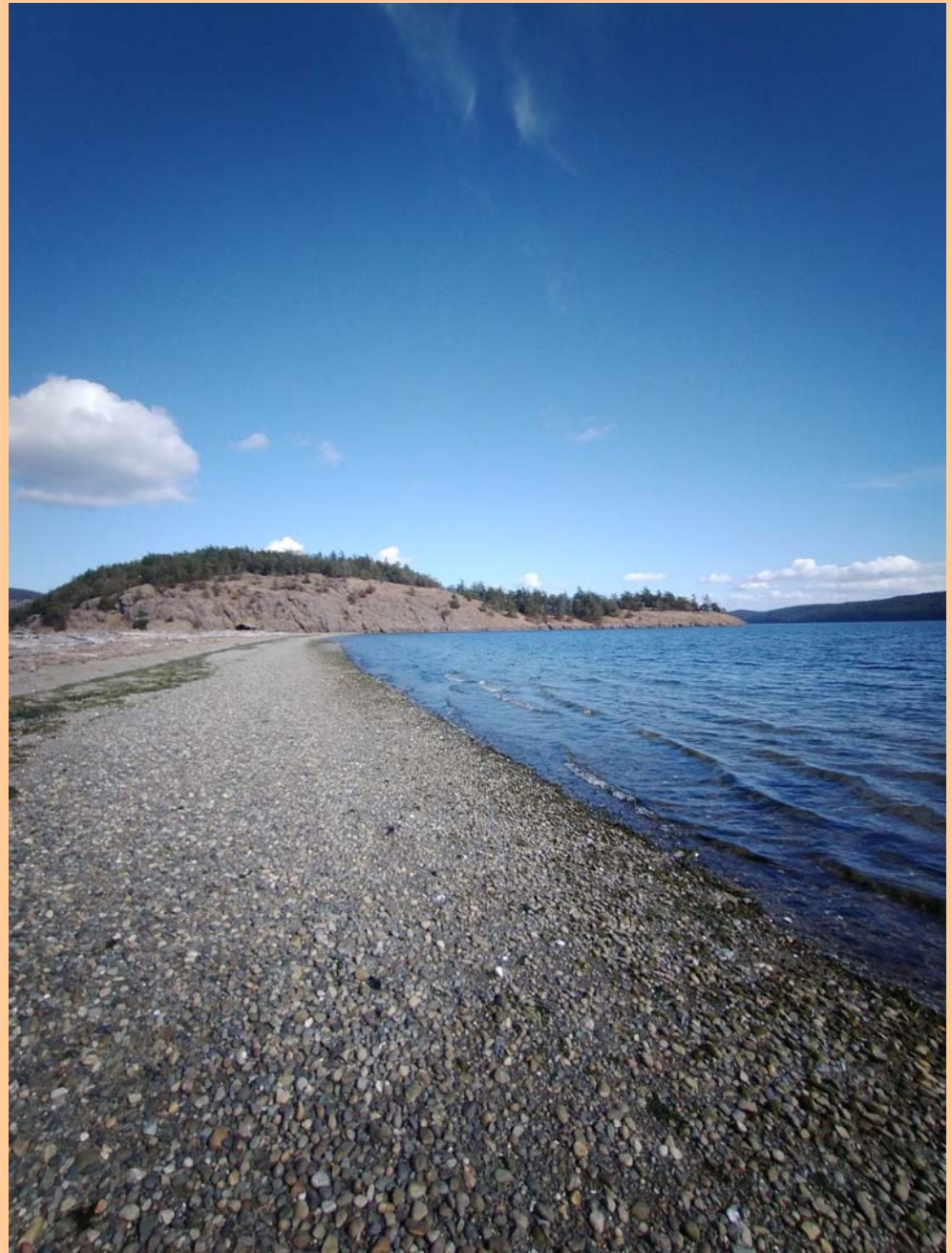
Anacortes Boatyard



Cap Sante Marina



John G joined us for a day at Spencer Spit



Spencer Spit



Spencer Spit



Larry and Eric



James Island



James Island



Island kids on a field trip in their landing craft.





James Island



Cruise to Deer Harbor



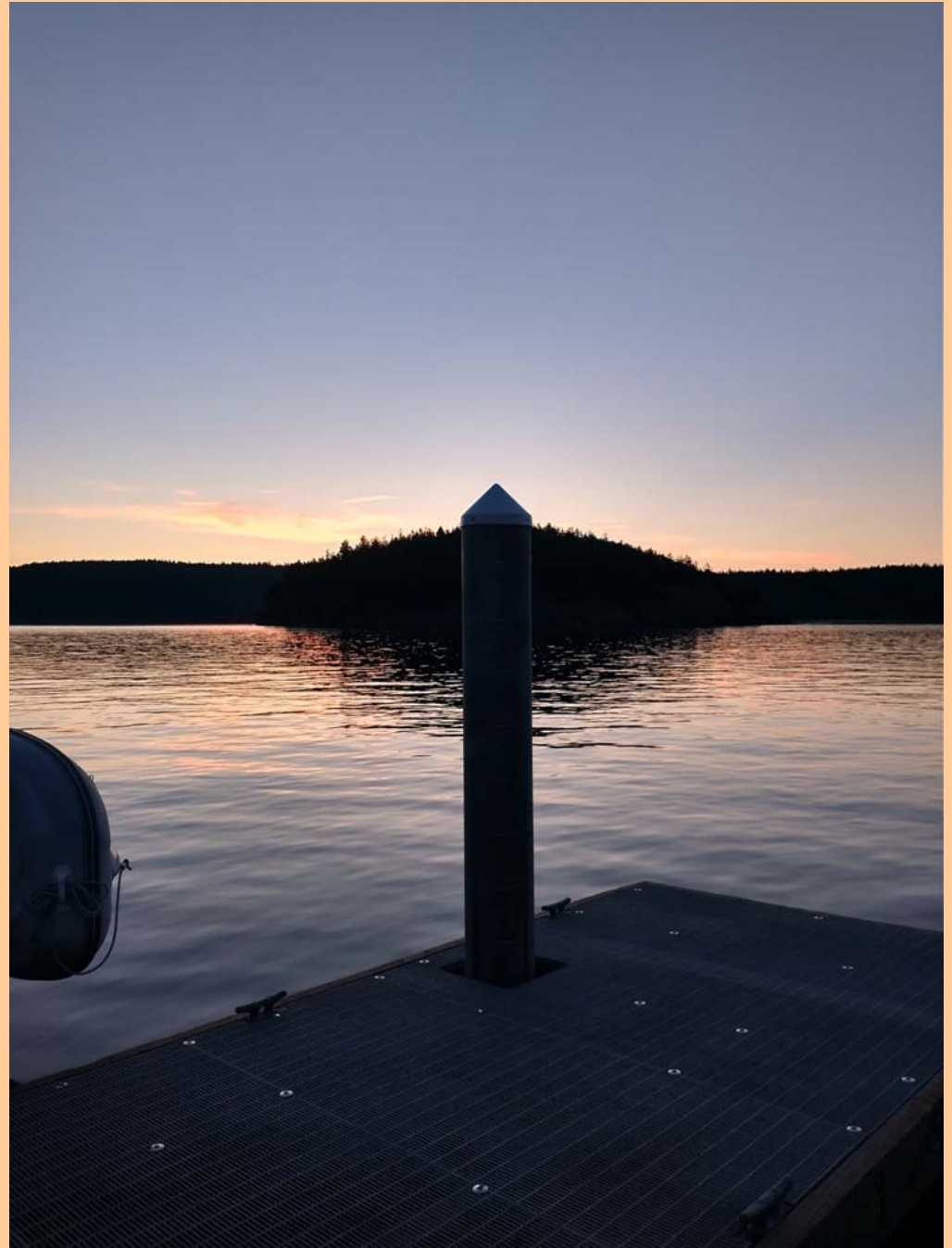
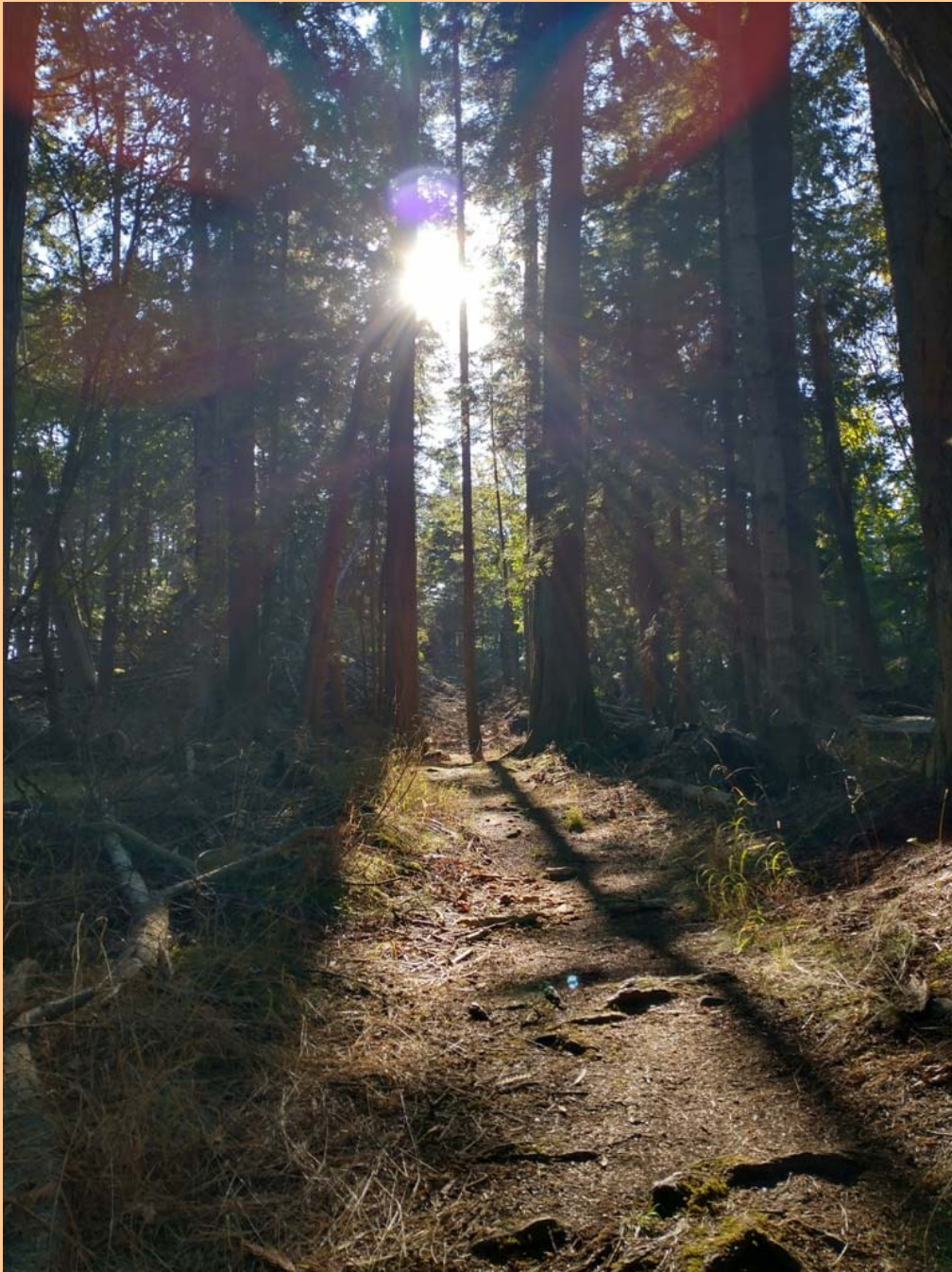
Deer Harbor



Lunch



Harbor Seal



Second stop at James Island on the way back to Anacortes



Rosario Strait to the South from James Island



James Island – Larry and Madrona tree



Back at Cap Sante in Anacortes